

**PRODUCT  
USE  
GUIDE**



www.marvo-tech.com

**QUICK  
INSTALLATION  
GUIDE**

# CH-106

**ADVANCED  
GAMING CHAIR**

**TECH SPECS**

100 mm gas lift system  
360 mm nylon base arms  
Materials: PU, PVC  
Backrest width: 57 cm  
Armrest height: 33cm  
Seat width: 53 cm  
Backrest height: 85 cm  
Seat depth: 50 cm  
Seat adjustable height: 44 - 54 cm  
Chair height: 105 - 135 cm  
Maximum load: 150 kg  
N.W.: 16.5 kg

**QUICK  
INSTALLATION  
GUIDE**

**PRODUCT PRESENTATION**

**FEATURES**

- Stable and sturdy nylon base, pu caster wheels
- Butterfly adjusting mechanism, 360 degree rotation
- Full backrests backrest for a lie position
- Camber pvc armrest.



**QUICK  
INSTALLATION  
GUIDE**

**SAFETY NOTES**

- Keep the equipment dry. Keep away from precipitation, humidity, all types of liquids and condensation.
- Do not use the product with wet hands.
- Do not use or store the equipment in dusty or dirty areas.
- Do not store the equipment under high-temperature or low-temperature conditions (this may damage it).
- Do not drop, knock or shake the equipment (use may result in breakage).

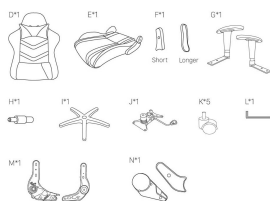
**QUICK  
INSTALLATION  
GUIDE**

**INSTALLATION**

- Please read the following steps carefully

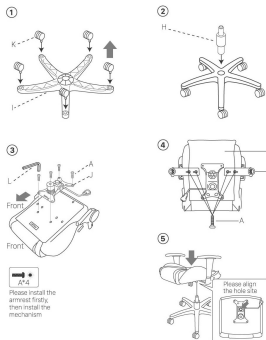


**Chair Parts**

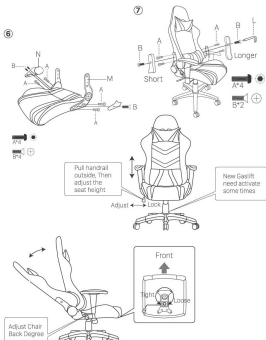


www.marvo-tech.com

**QUICK  
INSTALLATION  
GUIDE**



**QUICK  
INSTALLATION  
GUIDE**



**QUICK  
INSTALLATION  
GUIDE**

**GENERAL INFORMATION**

Unauthorized repairs or disassembly of the product will void the warranty and may cause its damage.  
- This product is safe and complies to EU requirements.  
- This product is manufactured conforming with the European RoHS standard. This standard was introduced to reduce the amount of electrical and electronic waste emitted into the atmosphere.  
- Using the WEEE symbol (the crossed-out bin) indicates that the electrical and electronic equipment inside the package can be recycled. When recycling waste properly you protect the environment and people health. Segregated household waste collection, aids recycle materials and components used for the production of this device. For detailed information about recycling, please contact your retailer or a local authority.

**QUICK  
INSTALLATION  
GUIDE**

**Warranty Card**

Product Model: \_\_\_\_\_  
Product Serial no.: \_\_\_\_\_  
Date of Purchase: \_\_\_\_\_  
Customer Name: \_\_\_\_\_  
TEL: \_\_\_\_\_  
Address: \_\_\_\_\_  
Distributor Name: \_\_\_\_\_  
TEL: \_\_\_\_\_

Warranty Card is the important certificate for after-sale service of Marvo products, please keep it safe.

www.marvo-tech.com

**BORN FOR GAMING**

